

# The Satin Touch

PLEXIGLAS SATINICE®

PLEXIGLAS® Crystal Ice

PLEXIGLAS® Satin Ice



## PLEXIGLAS SATINICE® Striking yet distinguished

PLEXIGLAS SATINICE® sheets have one satin surface (SC) or two satin surfaces (DC).

They come in a **wide variety of colors**.

### Properties

- extremely fine matte surface
- large range available from stock for individual applications
- available in many different colors
- supplied from 3 to 25 mm thickness, also as blocks >25 mm
- insensitive to scratching and traces of wear



# Product Overview



## PLEXIGLAS® Crystal Ice Eye-catching elegance

PLEXIGLAS® Crystal Ice sheets have surfaces that are upgraded with diffuser beads on one side (SC) or both sides (DC).

The **color combination** of the surface(s) and the core can be **freely chosen**.

### Properties

- offered in 2 to 8 mm thickness
- low thickness tolerance
- perfect reproduction of engravings
- texture is retained after thermoforming
- insensitive to scratching and traces of wear
- can be manufactured in different sheet lengths

## PLEXIGLAS® Satin Ice Perfect in every light

PLEXIGLAS® Satin Ice sheets, rods and tubes are uniformly matte through and through.

They show their **real strength** in **transmitted light**, which is evenly diffused by the beads embedded in the material.

### Properties

- provided as sheets, rods and tubes
- very high light transmission combined with extraordinary light diffusion
- texture is retained after thermoforming
- insensitive to scratching and traces of wear
- can be manufactured in different sheet lengths

PLEXIGLAS® sheets with satin surfaces lend new properties and a touch of class to all acrylic applications.

Are you uncertain which product is the right solution for your project? We will be pleased to advise you. Contact [www.plexiglas.net](http://www.plexiglas.net) or mail us at [info@plexiglas.net](mailto:info@plexiglas.net).





## PLEXIGLAS SATINICE®

The velvety surface of PLEXIGLAS SATINICE® just begs to be touched. It has a noble, high-class appearance and looks warm and soft.

Unlike other plastics, these fine surfaces are insensitive to scratching and show excellent mar resistance. No chance for finger marks! The material can be bonded, lasered and edge-polished, in thicknesses of 3 to 25 mm.

The options for using these cast, velvety materials are almost endless: decorative and functional elements of tradeshow booths and store fixtures, interior design or high-quality furniture, to name just a few.



# Product Overview



## PLEXIGLAS® Crystal Ice

PLEXIGLAS® Crystal Ice belongs to the family of satin-touch PLEXIGLAS® products and is an attractive addition to this successful range. This extruded grade of PLEXIGLAS® can be supplied with one satin surface (SC) or with two satin surfaces (DC).

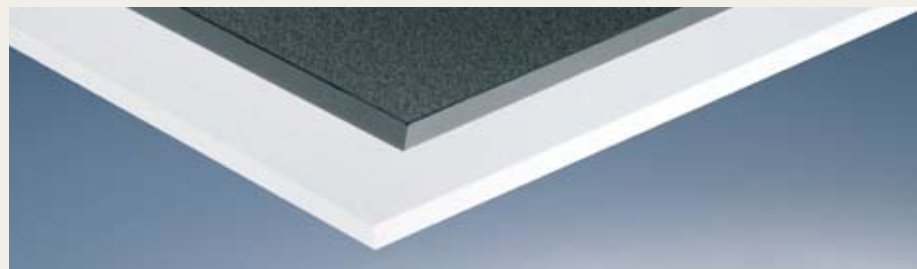
The satin surfaces show excellent mar resistance and are insensitive to scratches and traces of everyday wear.

PLEXIGLAS® Crystal Ice can be sawed, milled, drilled, formed and bonded just like all other extruded PLEXIGLAS® sheets. The special advantage is that the surface texture is retained after thermoforming.

## Eye-catching elegance

Innovative acrylic combinations are very important for furniture making, store fixtures and trade-show booth construction, and enable manufacturers and designers to come up with new creations for a modern, elegant look.

The PLEXIGLAS® Crystal Ice grades show convincing performance in all applications that call for transparency, brilliance, hardness and scratch resistance, combined with colorfastness and weather resistance.





# Soothe the eyes with gentle light!



## PLEXIGLAS® Satin Ice

Soothe the eyes with gentle light! PLEXIGLAS® Satin Ice turns light into a unique experience. Soft, pleasant lighting devoid of harsh shadows makes for agreeable surroundings. Different light sources complement each other harmoniously. Design with light and PLEXIGLAS® Satin Ice!

PLEXIGLAS® Satin Ice contains many tiny diffuser beads that continually change the light propagation. That ensures optimum light diffusion.

Whether lighted or transilluminated, PLEXIGLAS® Satin Ice is equally suitable for luminaires, signage, generously dimensioned glazing and small spotlights.

What is more, thanks to its high light transmission and excellent light diffusion, PLEXIGLAS® Satin Ice significantly cuts energy costs when employed as a luminaire cover or illuminated sign.

PLEXIGLAS® Satin Ice has it all – it is restful to the eye, mood-enhancing, pleasant to the touch and highly functional too.

## Adhesives

The adhesives ACRIFIX® 195 DC and ACRIFIX® 196 DF provide an impeccable bond between the materials presented in this brochure. The matte satin joints obtained after curing create a harmonious impression. For an overview of the complete range of adhesives, go to [www.plexiglas.net](http://www.plexiglas.net).



# Sales Range

PLEXIGLAS SATINICE® SC and DC are available in 25 mm thickness and the standard size of 3,050 x 2,030 mm.

PLEXIGLAS® Satin Ice and PLEXIGLAS® Crystal Ice are available in size 3,050 x 2,050 mm.

Items in bold print are available from stock.

We supply cut-to-size series of all grades from size 100 mm x 25 mm.

Color	Grade	$\tau_{Des}$	Thickness in mm
<b>PLEXIGLAS SATINICE® SC</b>			
Clear	0F00 SC	92 %	<b>3, 4, 5, 6, 8, 10, 12, 15, 20, 25</b>
Green (silicate green)	6C03 SC	91 %	<b>3, 4, 5, 6, 8, 10, 12, 15, 20, 25</b>
White	WH02 SC	49 %	<b>3, 4, 5, 6, 8, 10, 12, 15, 20, 25</b>
Black	9H01 SC	0 %	<b>3, 4, 5, 6, 8, 10, 12, 15, 20, 25</b>
<b>PLEXIGLAS SATINICE® DC</b>			
Crystal	0F00 DC	91 %	<b>3, 4, 5, 6, 8, 10, 12, 15, 20, 25</b>
Snow	WH10 DC	73 %	<b>3, 4, 5, 6, 8, 10, 12, 15, 20, 25</b>
Citrus	1C01 DC	89 %	3, 4, 5, <b>6, 8, 10, 12, 15, 20, 25</b>
Orange	2C02 DC	50 %	3, 4, 5, <b>6, 8, 10, 12, 15, 20, 25</b>
Mandarin	2H08 DC	43 %	<b>3, 4, 5, 6, 8, 10, 12, 15, 20, 25</b>
Bright Orange	2C01 DC	61 %	3, 4, 5, <b>6, 8, 10, 12, 15, 20, 25</b>
Melon Red	3H04 DC	56 %	3, 4, 5, <b>6, 8, 10, 12, 15, 20, 25</b>
Cherry	3C01 DC	4 %	3, 4, 5, <b>6, 8, 10, 12, 15, 20, 25</b>
Strawberry	3C04 DC	19 %	<b>3, 4, 5, 6, 8, 10, 12, 15, 20, 25</b>
Bright Red	3C02 DC	33 %	3, 4, 5, <b>6, 8, 10, 12, 15, 20, 25</b>
Plum	4H01 DC	44 %	3, 4, 5, <b>6, 8, 10, 12, 15, 20, 25</b>
Ice Blue	5H03 DC	57 %	<b>3, 4, 5, 6, 8, 10, 12, 15, 20, 25</b>
Sky Blue	5C01 DC	5 %	3, 4, 5, <b>6, 8, 10, 12, 15, 20, 25</b>
Ice Green	6C03 DC	89 %	<b>3, 4, 5, 6, 8, 10, 12, 15, 20, 25</b>
Kiwi	6H07 DC	50 %	3, 4, 5, <b>6, 8, 10, 12, 15, 20, 25</b>
Bright Green	6C02 DC	85 %	3, 4, 5, <b>6, 8, 10, 12, 15, 20, 25</b>
Pine	6C01 DC	27 %	3, 4, 5, <b>6, 8, 10, 12, 15, 20, 25</b>
Terra	8C01 DC	15 %	3, 4, 5, <b>6, 8, 10, 12, 15, 20, 25</b>
Carbon	7C17 DC	2 %	3, 4, 5, <b>6, 8, 10, 12, 15, 20, 25</b>
Peach	8H03 DC	72 %	3, 4, 5, <b>6, 8, 10, 12, 15, 20, 25</b>
Chine	8H04 DC	63 %	3, 4, 5, <b>6, 8, 10, 12, 15, 20, 25</b>
Apricot	8H05 DC	45 %	3, 4, 5, <b>6, 8, 10, 12, 15, 20, 25</b>
Caramelo	8H09 DC	37 %	3, 4, 5, <b>6, 8, 10, 12, 15, 20, 25</b>
Fume	7H05 DC	20 %	3, 4, 5, <b>6, 8, 10, 12, 15, 20, 25</b>
Lava	7H07 DC	19 %	3, 4, 5, <b>6, 8, 10, 12, 15, 20, 25</b>
Asfalto	7H08 DC	6 %	3, 4, 5, <b>6, 8, 10, 12, 15, 20, 25</b>
Viento	7H09 DC	38 %	3, 4, 5, <b>6, 8, 10, 12, 15, 20, 25</b>
Niebla	7H10 DC	39 %	3, 4, 5, <b>6, 8, 10, 12, 15, 20, 25</b>
Gris	7H11 DC	25 %	3, 4, 5, <b>6, 8, 10, 12, 15, 20, 25</b>
Graphit	9H02 DC	1 %	3, 4, 5, <b>6, 8, 10, 12, 15, 20, 25</b>
<b>PLEXIGLAS® Crystal Ice</b>			
Clear	0M001 SC	92 %	<b>2, 3, 4, 5, 6, 8</b>
Clear	0M001 DC	92 %	<b>2, 3, 4, 5, 6, 8</b>
White	WM500 SC	73 %	<b>2, 3, 4, 5, 6, 8</b>
White	WM500 DC	73 %	<b>2, 3, 4, 5, 6, 8</b>
Black	9M802 SC	0 %	<b>2, 3, 4, 5, 6, 8</b>
Black	9M802 DC	0 %	<b>2, 3, 4, 5, 6, 8</b>
<b>PLEXIGLAS® Satin Ice</b>			
Clear	0D010 DF	82 %	<b>2, 3, 4, 5, 6, 8</b>
<b>Tubes</b>			
<b>PLEXIGLAS® Satin Ice</b>			
Clear	0D010 DF	82 %	Wall thickness 3 mm Outside diameter: <b>50, 60, 70, 80, 90, 100, 150, 200</b>

Fashion Colors

Please note that it is not possible to reproduce the real colors faithfully for reasons of printing technique. We will be pleased to send you color samples on request.

® = registered trademark

PLEXIGLAS, PLEXIGLAS SATINICE and ACRIFIX are registered trademarks of Evonik Röhm GmbH, Darmstadt, Germany.

Certified to DIN EN ISO 9001 (Quality)  
and DIN EN ISO 14001 (Environment)

This information and all further technical advice is based on our present knowledge and experience. However, it implies no liability or other legal responsibility on our part, also with regard to existing third party intellectual property rights, especially patent rights. In particular, no warranty, whether express or implied, or guarantee of product properties in the legal sense is intended or implied. We reserve the right to make any changes according to technological progress or further developments. The customer is not released from the obligation to conduct careful inspection and testing of incoming goods. Performance of the product described herein should be verified by testing, which should be carried out only by qualified experts in the sole responsibility of a customer. Reference to trade names used by other companies is neither a recommendation, nor does it imply that similar products could not be used.

Ref-No. 411-24 March 2008  
30/0308/09544 (en)



**EVONIK**  
INDUSTRIES

Business Unit  
Performance Polymers

Evonik Röhm GmbH  
Kirschenallee  
64293 Darmstadt  
Deutschland  
info@plexiglas.de  
www.plexiglas.de  
www.evonik.com

**Evonik. Power to create.**